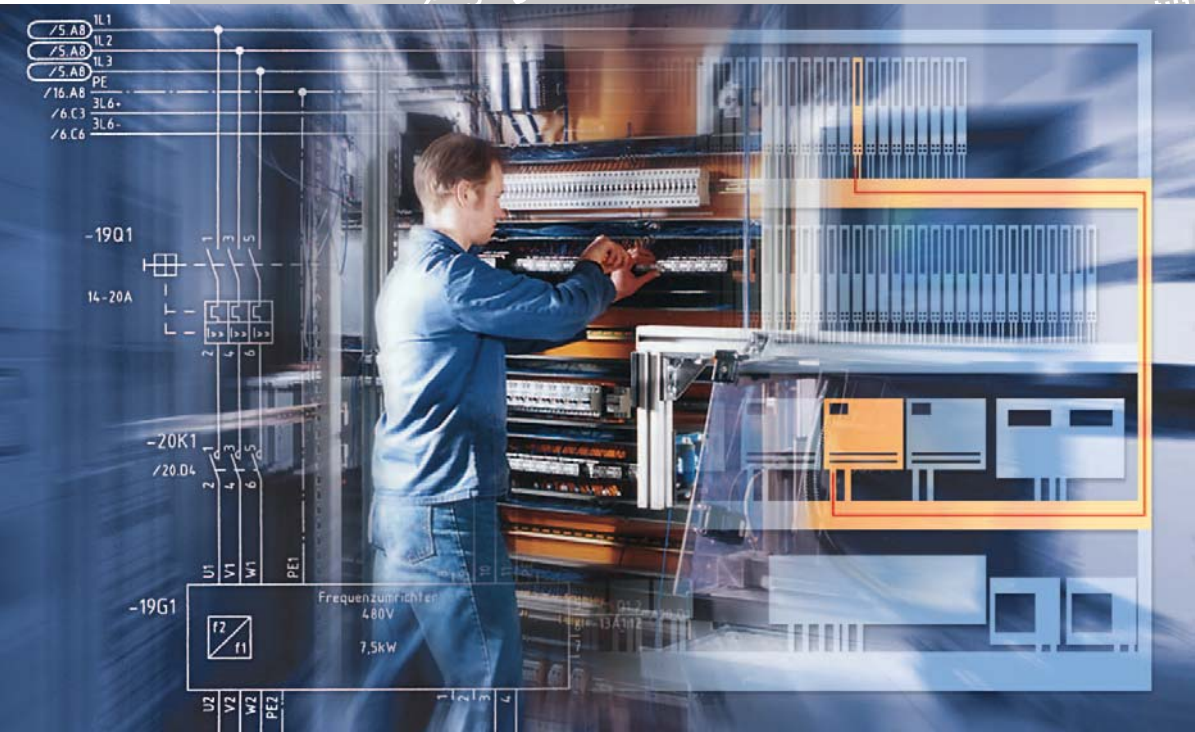


ELCAD
fastwire

More efficient wiring

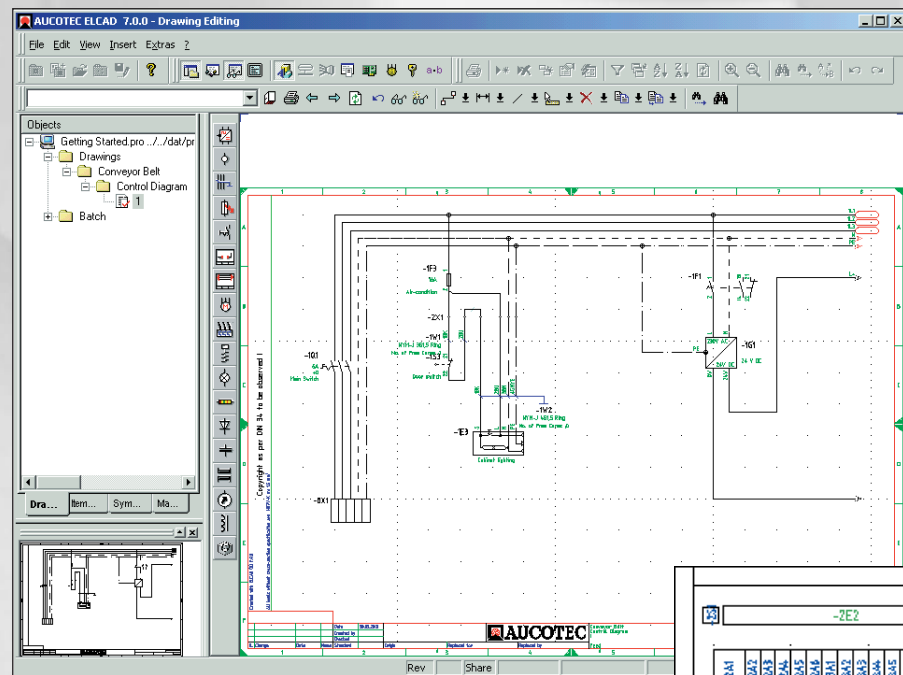


**ELCAD*fastwire* – from engineering workflow
direct to manufacturing**

Let's make engineering easy!



More efficient wiring - from engineering workflow direct to manufacturing



- manual or semi-automatic placement of components from the parts list
- components are offered either pre-selected according to various criteria or in sorted form
- symbols automatically adjust to the (footprint) size of the component and the scale of the layout drawing
- an integrated function for scaled dimensioning of the layout drawing

ELCAD*fastwire* is the road to a 50 to 60 percent increase in efficiency in the wiring of modules, mounting plates or entire cabinets. The savings are evident in all areas:

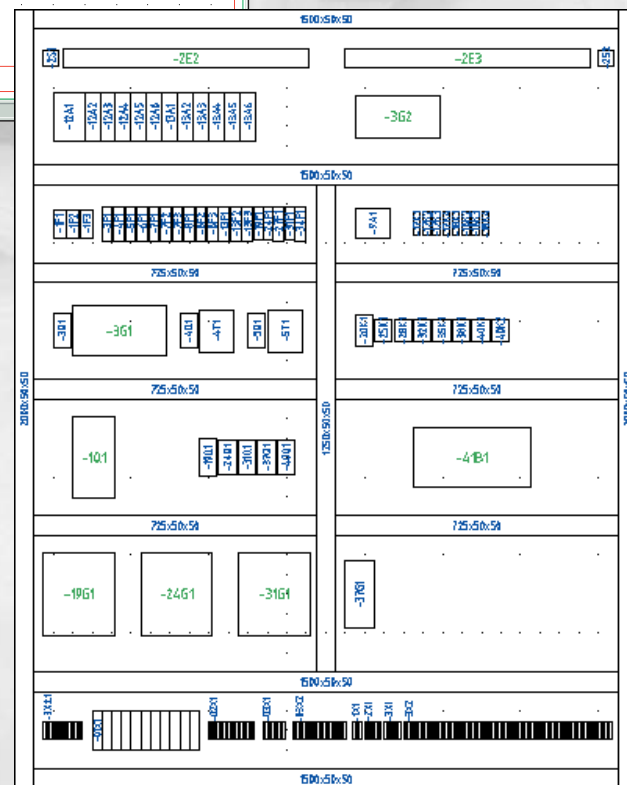
- for standardized mounting plates, where each reduction in materials and assembly times means less cost
- for individual cabinet design, where the demand for optimum wiring means that highly qualified staff members spend an enormous amount of additional time in planning and manufacture unless supported by ELCAD*fastwire*.
- saving manpower resources by employing operators trained on the job for cabinet wiring.

Circuit diagram

Without doubt the circuit diagram, which shows all of the necessary information at a glance, is the ideal medium for defining the interconnection of components. For the quick generation of circuit diagrams, ELCAD 7 offers you a proven tool with comprehensive functionality that, with its outstanding ergonomic design, is also easy to use.

Layout diagram

The creation of the layout diagram is directly integrated into ELCAD 7, so you do not need an additional CAD tool. The advantage is that the cabinet layout module directly accesses device information that has evolved from the circuit diagram creation. On this basis it offers:

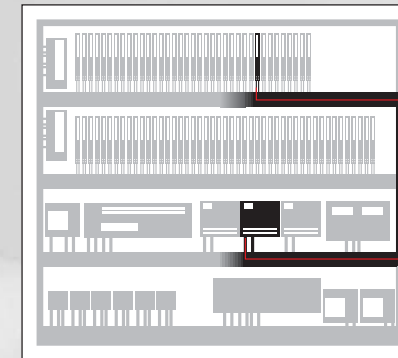


Wiring list

One of the achievements that have made ELCAD successful is the ability to determine the optimum wiring on the basis of the logical information in the circuit diagram and a number of adjustable criteria. ELCAD is so intelligent in doing this that it is not necessary to precisely define the wiring in the circuit diagram - "point-to-point wiring" is entirely sufficient. All of the results of the analysis are stored in the wiring list database and are available as derived documents.

ELCAD*fastwire*

Based on a combination of wiring list and layout diagram, ELCAD*fastwire* determines the optimum wiring runs. Wiring runs can be defined individually or created automatically and then optimised for routing. The user can take the 2-D



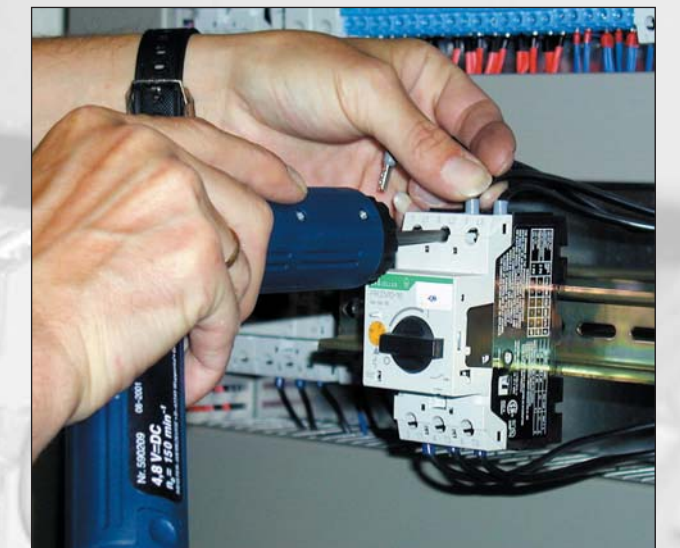
view of the layout diagram, individually select a wire, and manually modify its route by following graphical prompts. All wiring runs are displayed graphically whether created manually or automatically. The

determined lengths and the routing are automatically incorporated into the wiring list and are immediately available to all other editing areas in ELCAD. Wire cross-section, color, and numbering are also managed. When establishing the necessary connector-related specifications, ELCAD avoids any unnecessary effort. For smaller components it is sufficient to state whether a connector is located at the top or the bottom of the component. For larger components it makes sense to specify a range, and for complex or especially large components you can specify the precise coordinate of the connector. ELCAD*fastwire* adjusts to these component connector definitions.



Full integration of automatic device data for wire setting machines

In order to realize additional potential savings, ELCAD*fastwire* can automatically supply all of the necessary data to wire setting machines, such as the TRIATHLON Work Center from Metzner. The Work Center ensures that each specified wire is produced automatically, with the correct color, length and desired markings (e.g. label and destination data).



Fast and reliable manufacturing

All of the information for the production of mounting plates or cabinets is now available:

- The components are mounted on the basis of the layout diagram.
- The wiring list contains all of the information for each individual wire. The entire routing, from the connector via the individual routing sections to the target connector, is documented alongside the material data of the wire.
- If you work with prefabricated wires with fixed length increments, fast and dependable selection is facilitated. If an automatic device for wire setting is used, the exact wires with correct markings are created ready for assembly.
- If ELCAD or ELCAD*view* is used in manufacturing, wiring information is offered step by step directly at the monitor greatly simplifying the wiring task.

More Efficient - Higher Quality

The way to the completely integrated solution

- ELCAD has, for years, been the technologically advanced system for planning and documentation in electrical engineering. Those who, up to now, have somehow come to terms with outdated operating concepts, incompatibilities, and the potential missing from other systems, now have the chance to re-orient themselves. Everything points toward ELCAD 7 - see for yourself.
- ELCAD is available in various configurations. Please consult our survey sheet "Performance, Scaling, Options" for further information.
- The module Cabinet Layout is integrated into ELCAD from the ELCAD Professional configuration onwards. Optionally it is available for the scaling option ELCAD-Plus.
- ELCAD*fastwire* is an optional module for ELCAD 7 and does not need any additional system pre-requisites.
- The TRIATHLON Work-Center is a product of Metzner Engineering. (<http://www.metzner.com>)



AUCOTEC AG
Oldenburger Allee 24 · D-30659 Hanover
Telephone +49 511 61 03-0
Telefax +49 511 61 40 74
www.aucotec.com